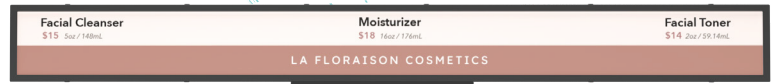


LINQ

37" SHELF EDGE DIGITAL DISPLAYS

Deliver powerful, in-aisle shopping experiences and brand messaging with eye-catching clarity using LINQ all-in-one shelf edge displays. Featuring full 3840x174 resolution and 500 Nits brightness, the displays attract attention from practically every viewing position. Designed for continuous commercial use, the displays are powered by DC power. Optional accessories include a camera, barcode scanner, or mobile sensor to deliver personalized experiences.

Shelf edge displays are equipped with Advanced Super Dimension Switch technology, which provides higher transmittance, brightness, and contrast ratio, as well as the wide viewing angle. Specifically developed for high traffic retail environments such as grocery, convenience and retail stores, the frame is made with SECC, electro-galvanized commercial quality cold rolled steel, to prevent tampering and vandalism. An integrated, robust content management platform rounds out the LINQ full solution, providing media scheduling and application, content and device management across diverse locations.



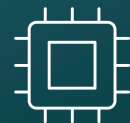
OPTIONAL SENSORS AND CAMERA

Gather customers' buying patterns and use that data to optimize shopping experiences



INTEGRATED MEDIA PLAYER

Robust content management platform for content delivery, scheduling and device monitoring



BUILT FOR 24/7 CONTINUOUS USE

Engineered for commercial applications and uninterrupted playback

ADDITIONAL FEATURES

- 37.1" LCD display with LED backlight
- DC powered
- Linux OS
- 3840x174 resolution
- 500 nits brightness
- Two 2W speakers
- Wide viewing angle at 89°
- Built-in Bluetooth
- Extra slim casing designed specifically for shelf mounting

Description	Specification	
	Standard	Plus
Power	DC 12V with retention bracket	
Operating System	Linux 4.4 Kernel	
Memory	2 GB Dual-channel LPDDR4-3200 (1600 MHz)	4 GB Dual-channel LPDDR4-3200 (1600 MHz)
CPU	Six-core Rockchip RK3399 ARM 64-bit processor, up to 2.0 GHz Dual-core ARM Cortex-A72 and Quad-core ARM Cortex-A53	
GPU	ARM Mali-T860 MP4 Quad-core GPU	
Storage	32 GB high-speed eMMC 5.1	64 GB high-speed eMMC 5.1
Display Panel	37.1", 3840 x 174, 500 Nits Brightness, 89° Viewing Angle, 50,000 MTBF	
Touch Panel	Available in Touch and Non-Touch	
Speakers	Two 2W Speakers	
Network	Gigabit Ethernet RJ45, 2.4/5 GHz Dual-band WiFi (IEEE 802.11a/b/g/n/ac), Bluetooth 4.0	
Antenna	One WiFi/Bluetooth	
USB	One USB 2.0 Type C (Service), One USB 2.0 Micro (Accessory)	
Front Camera	8 Megapixel (Optional add-on)	
Other I/O	Buttons: Recovery and Reset (Pinhole)	
Mount	Customized Shelf Bracket	
Dimensions	Non-touch: 961.2 x 63.7 x 32 mm / 37.84 x 2.51 x 1.26 in Touch: 971.8 x 74.3 x 38 mm / 38.26 x 2.93 x 1.50 in	
Net Weight	Non-touch: 2.3 kgs / 5.07 lbs Touch: 3.25 kgs / 7.17 lbs	
Enclosure	Metal casing with aluminum frame	
Storage Temperature	-20° - 60° C / -4° - 140° F	
Working Temperature	-0° - 50° C / 32° - 122° F	
Storage/Working Humidity	10 - 80%	
Warranty¹	1 year included, extended warranty available	
Optional Upgrades	Camera: External 8MP Camera Module	

¹Extended warranties must be added at time of purchase

